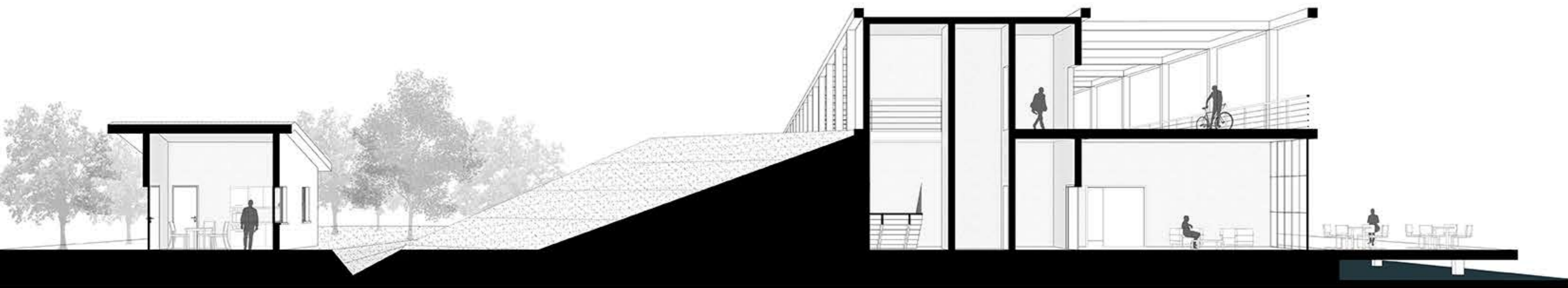
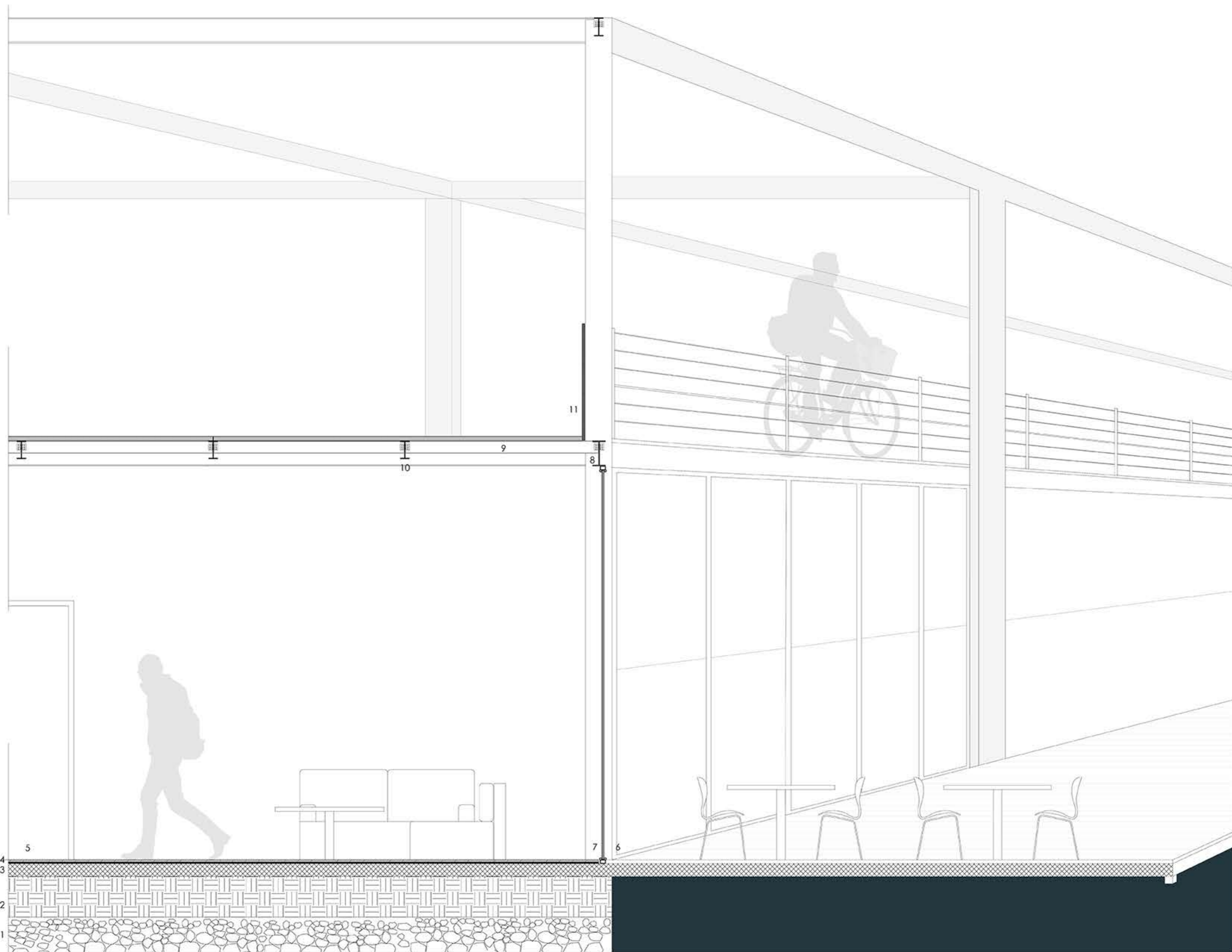




Pianta scala 1:100

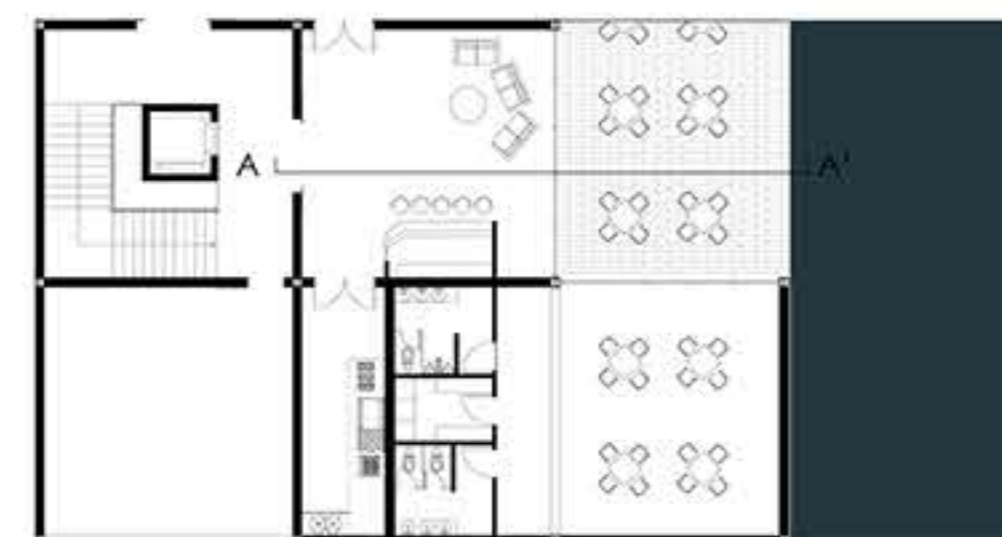
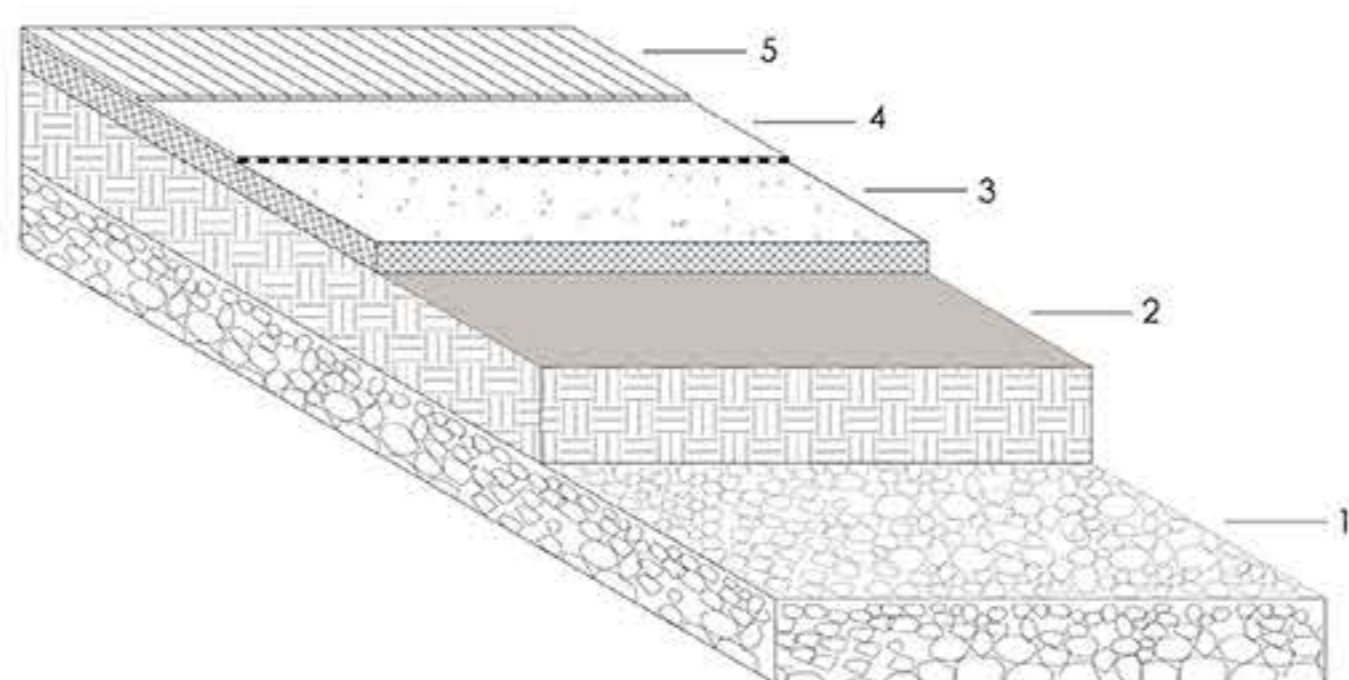


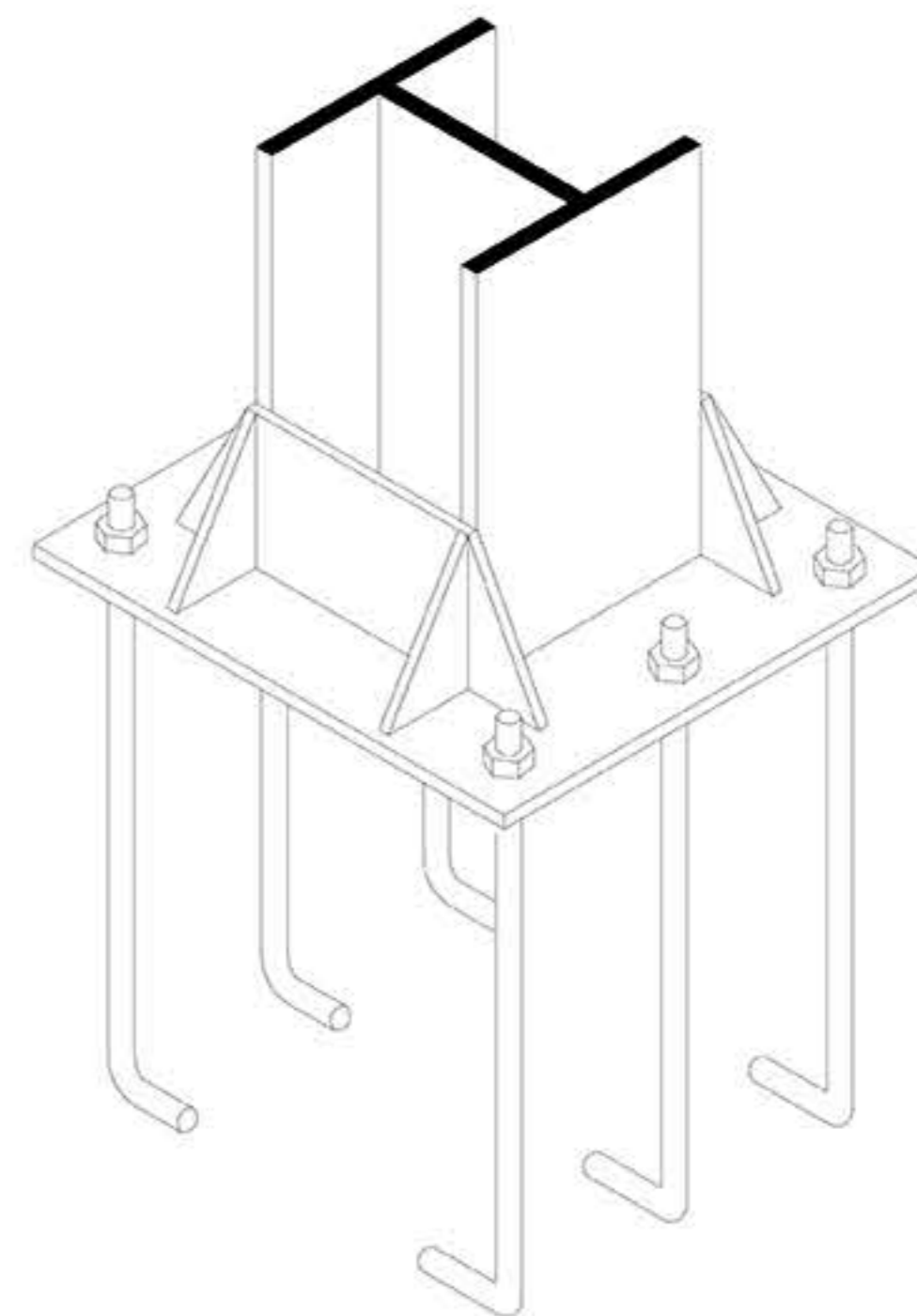
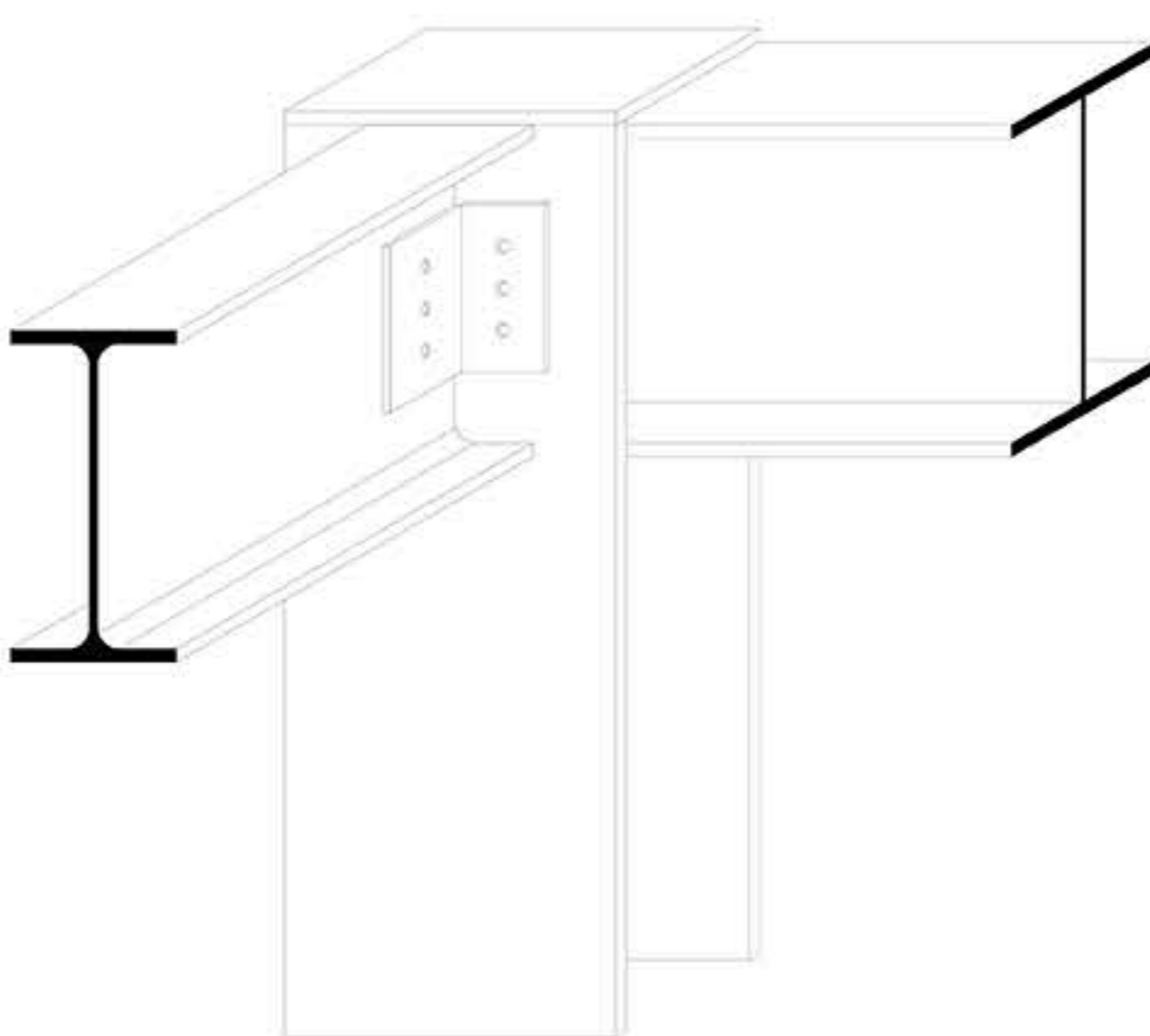
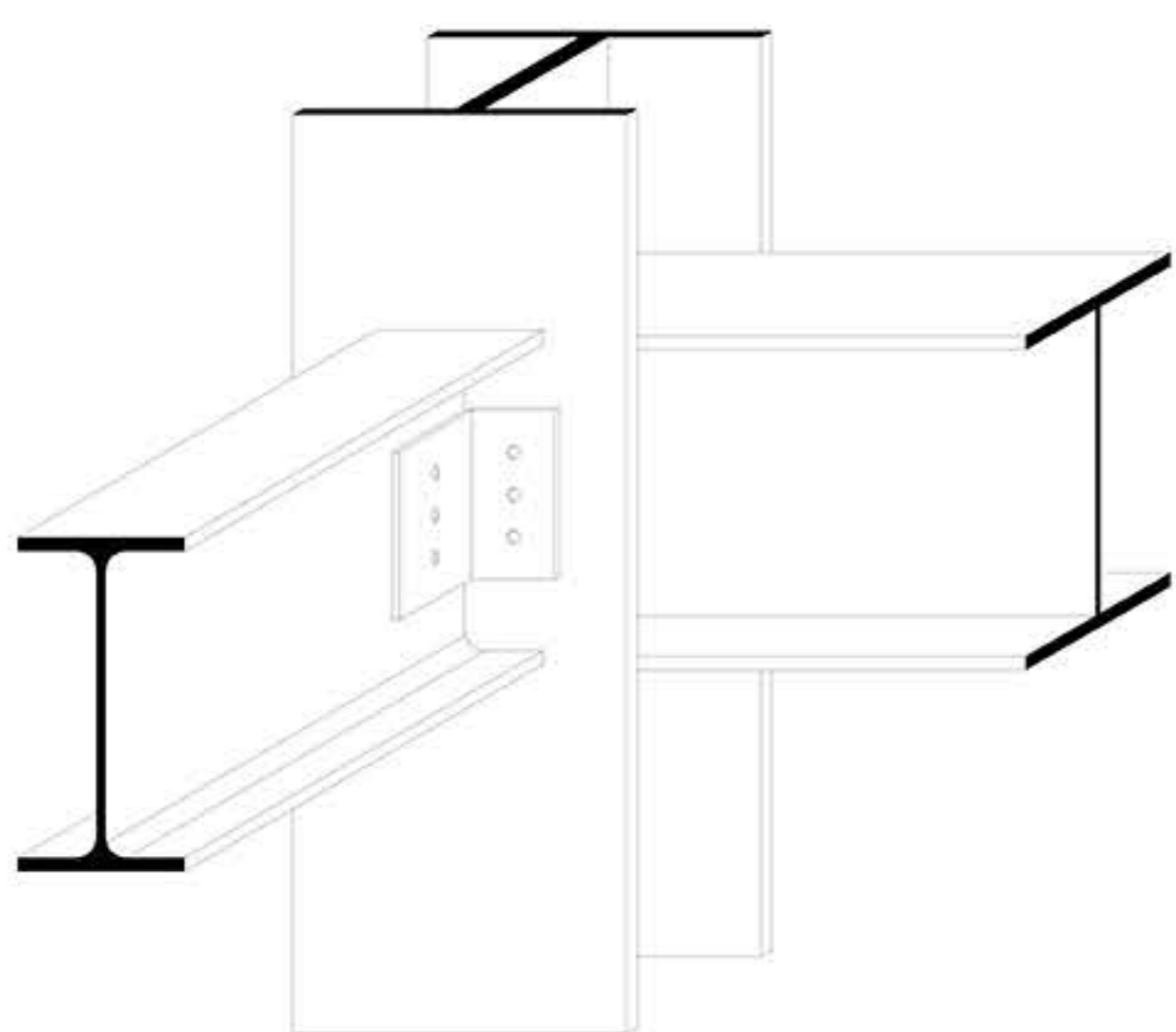
Sezione prospettica scala 1:100



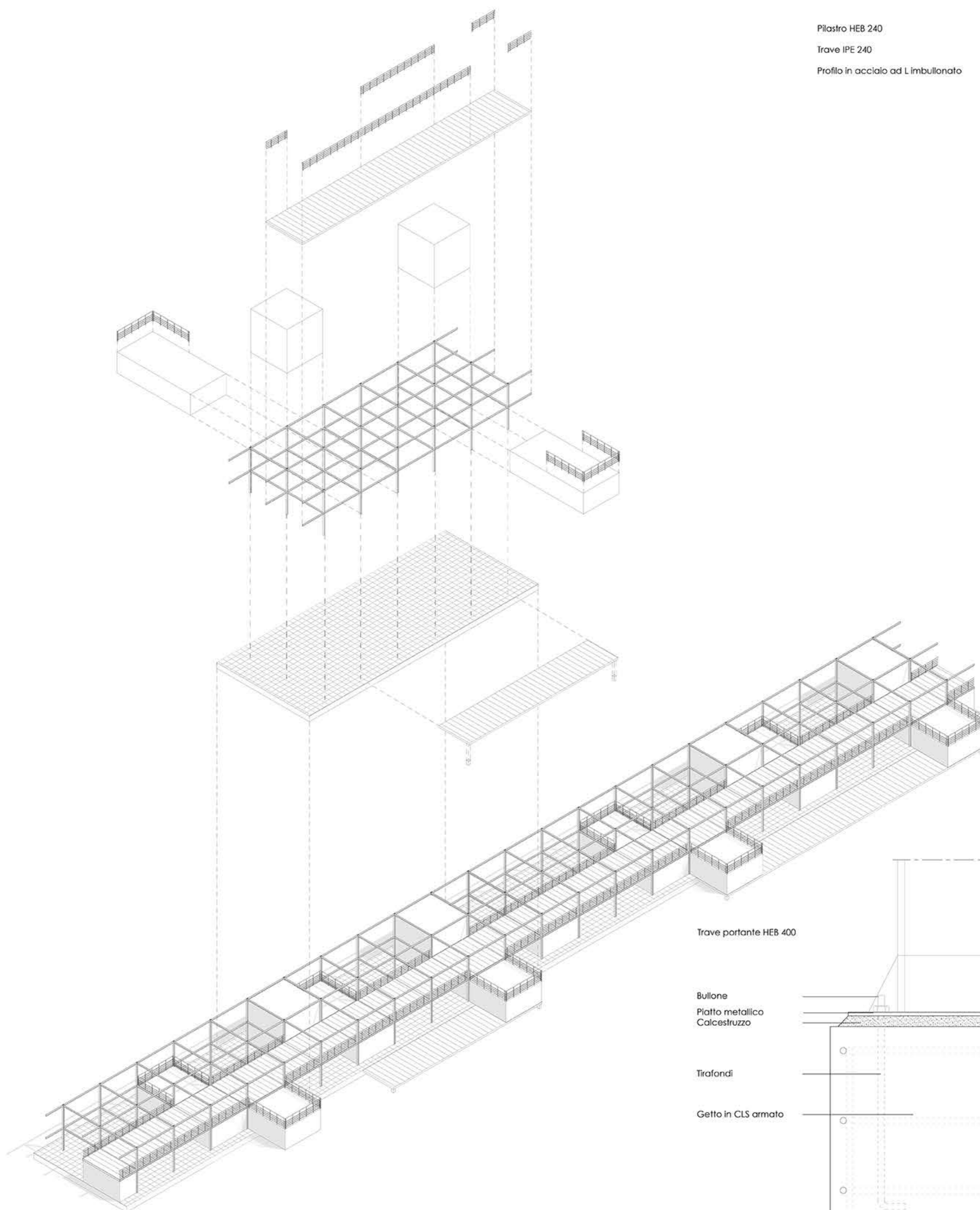
Sezione prospettica AA' scala 1:20

- 1 Ghiaia
- 2 Terreno
- 3 Calcestruzzo spessore 12 cm
- 4 Membrana isolante spessore 1,5 cm
- 5 Pavimentazione in legno spessore 2 cm
- 6 Infilso in alluminio
- 7 Pilastro HEB 240 mm
- 8 Trave IPE 240 mm
- 9 Trave IPE 120 mm
- 10 Trave IPE 120





Pilastro HEB 240  
Trave IPE 240  
Profilo in acciaio ad L imbullonato



Trave portante HEB 400

Bullone  
Piatto metallico  
Calcestruzzo

Tirafondi

Getto in CLS armato

